

## TorqVue™ Delivery System Sizing

The new TorqVue Delivery Sheaths have been tested for compatibility with each AMPLATZER Occluder Device to determine the *minimum* French size required for device advancement.

### DELIVERY SHEATH SIZE

AMPLATZER® TorqVue™ Delivery System*	5F 60cm	6F 60 or 80cm	7F 60 or 80cm	8F 60 or 80cm	9F 80cm	10F 80cm	12F 80cm
ASD		4 to 10mm	11 to 17mm	18 to 19mm	20 to 24mm	26 to 30mm	32 to 40mm**
Cribriform**				18 to 25mm	35mm		
PFO				18 to 25mm	35mm		
PDA	5/4mm	6/4 8/6 10/8mm	12/10 14/12** 16/14mm**				
Muscular VSD**	4mm	6 to 10mm	12mm	14 to 16mm	18mm		
Muscular VSD PI**					16 to 18mm	20 to 24mm	

\* Delivery Sheath sizing based on TorqVue Sheath dimensions only. Minimum size requirements with other catheter/sheath systems have not been verified.  
Note: Measurements in [mm] 1 FR [French]=0.33mm (inner ø)

### TORQVUE DELIVERY SYSTEM – ORDERING INFORMATION 45° AND 180° ANGLE

Order No.	Sheath Size	Tip Angle	Usable Length	Best Used With
9-ITV06F45/60	6 French	45°	60 cm	ASD / MUSCVSD
9-ITV07F45/60	7 French	45°	60 cm	ASD / MUSCVSD
9-ITV07F45/80	7 French	45°	80 cm	ASD / MUSCVSD
9-ITV08F45/60	8 French	45°	60 cm	ASD / MUSCVSD / PFO
9-ITV08F45/80	8 French	45°	80 cm	ASD / MUSCVSD / PFO
9-ITV09F45/80	9 French	45°	80 cm	ASD / MUSCVSD / PFO
9-ITV10F45/80	10 French	45°	80 cm	ASD
9-ITV12F45/80	12 French	45°	80 cm	ASD
9-ITV05F180/60	5 French	180°	60 cm	PDA
9-ITV06F180/60	6 French	180°	60 cm	PDA / MUSCVSD
9-ITV06F180/80	6 French	180°	80 cm	PDA / MUSCVSD
9-ITV07F180/80	7 French	180°	80 cm	PDA / MUSCVSD
9-ITV08F180/80	8 French	180°	80 cm	MUSCVSD
9-ITV09F180/80	9 French	180°	80 cm	MUSCVSD

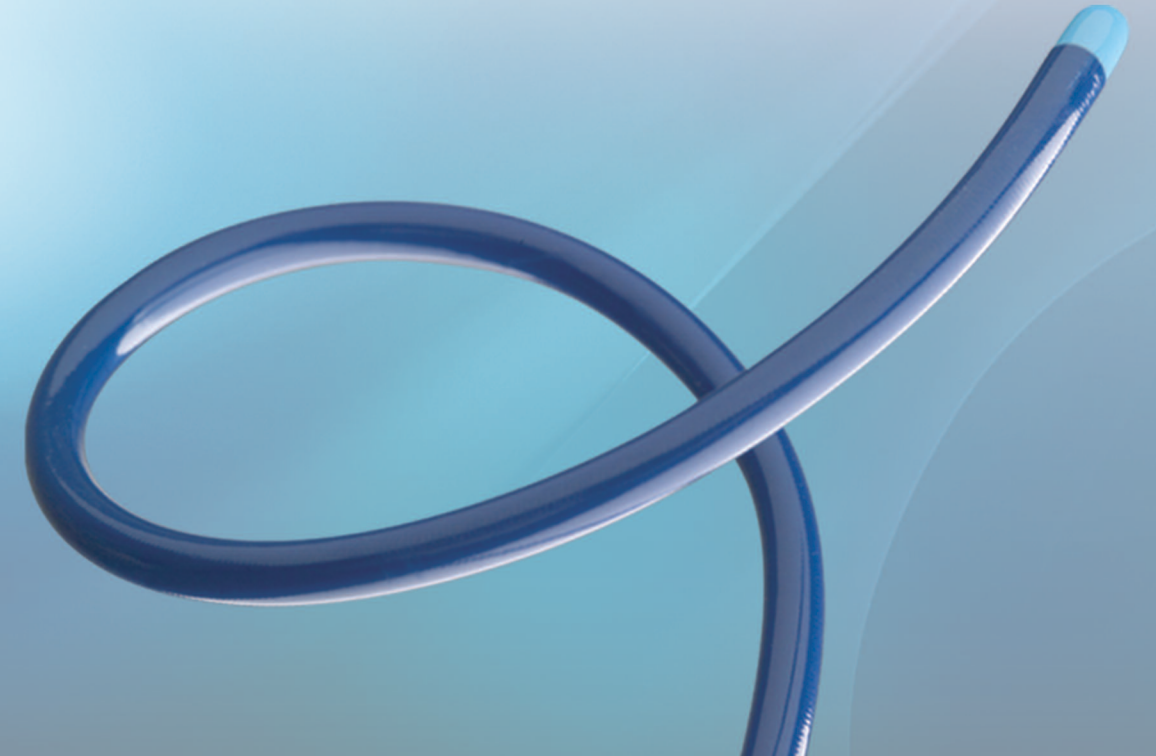
### TORQVUE EXCHANGE SYSTEM – ORDERING INFORMATION 45° AND 180° ANGLE

Order No.	Sheath Size	Tip Angle	Usable Length	Best Used With
9-EITV09F45/80	9 French	45°	80 cm	ASD / MUSCVSD / PFO
9-EITV12F45/80	12 French	45°	80 cm	ASD / MUSCVSD / PFO
9-EITV06F180/80	6 French	180°	80 cm	PDA / MUSCVSD
9-EITV08F180/80	8 French	180°	80 cm	PDA / MUSCVSD
9-EITV10F180/80	10 French	180°	80 cm	PDA / MUSCVSD

All TorqVue System ordering numbers are identified by the ITV acronym.

\*\*Not available in the USA.

# AMPLATZER® TorqVue™ Delivery System



For Controlled Delivery  
of AMPLATZER® Occluder Devices



CE 0473 R Only

Note: Refer to Instructions for Use for a complete listing of indications and usage, contraindications, warnings, and precautions. Contact AGA Medical Corporation for further information. AMPLATZER® is a registered trademark of AGA MEDICAL CORPORATION. © AGA MEDICAL CORPORATION, 2006. Not in any way connected with medical gas or equipment sold under the "AGA" brand by AGA AB or its successors. This device may not be available in all markets. Contact AGA Medical Corporation for availability.

MM00138 (01) Global 4/06

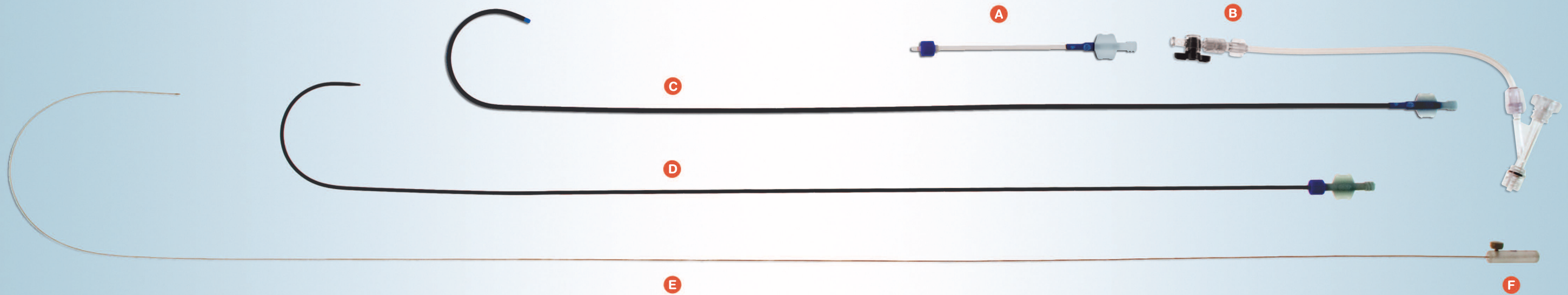


AGA Medical Corporation  
682 Mendelssohn Avenue  
Golden Valley, MN 55427 USA  
(888) 546-4407 Toll Free  
(763) 513-9227 Phone  
(763) 513-9226 Fax  
www.amplatzer.com Internet



# AMPLATZER® TorqVue™ Delivery System

## For Controlled Delivery of AMPLATZER Occluder Devices



The new AMPLATZER® TorqVue™ Delivery System reflects key design changes based on clinician feedback to improve delivery for AMPLATZER ASD, PFO, PDA and Muscular\*\* VSD Occluder Devices.

### DELIVERY SYSTEM COMPONENTS

- A** LOADING DEVICE
- B** HIGH-PRESSURE TOUHY-BORST ADAPTER
- C** DELIVERY SHEATH
- D** DILATOR
- E** DELIVERY CABLE
- F** PLASTIC CABLE VISE

**Reinforced polymer delivery sheath with stainless steel braid for added kink-resistance and flexibility**

**Radiopaque platinum distal marker band with soft atraumatic tip for precise location and visibility**

**Glow-in-the-dark hub for low-light visibility**

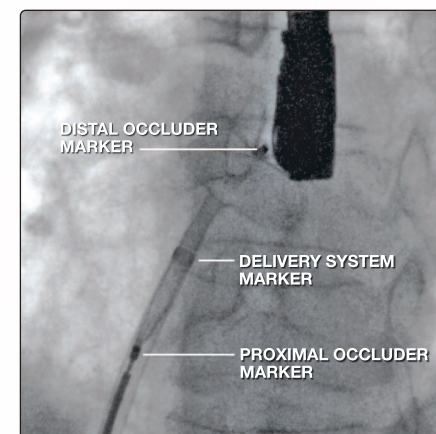
**Transition to a softer distal segment for improved maneuverability in tortuous anatomy**

**High-pressure Touhy-Borst adapter with tight-lock luer connector and side-arm stop-cock for high-pressure contrast injection**

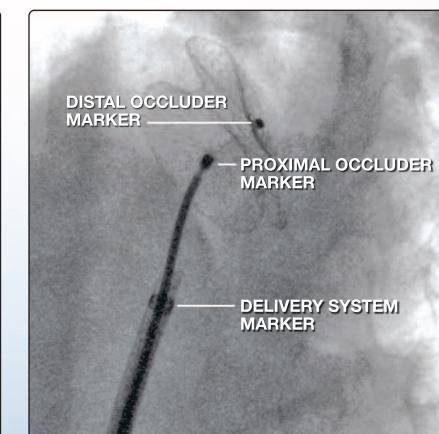
**Reduction in length of dilator now extends only 1.2 cm from delivery sheath distal tip**

**PTFE internal lumen coating for reduced friction**

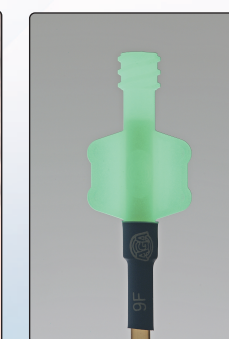
**Semi-clear loading collar for confirmation of collapse, flushing and air removal**



AMPLATZER Occluder Partially Deployed



AMPLATZER Occluder Fully Deployed



Glow-in-the-dark hub



Glow-in-the-dark hub